



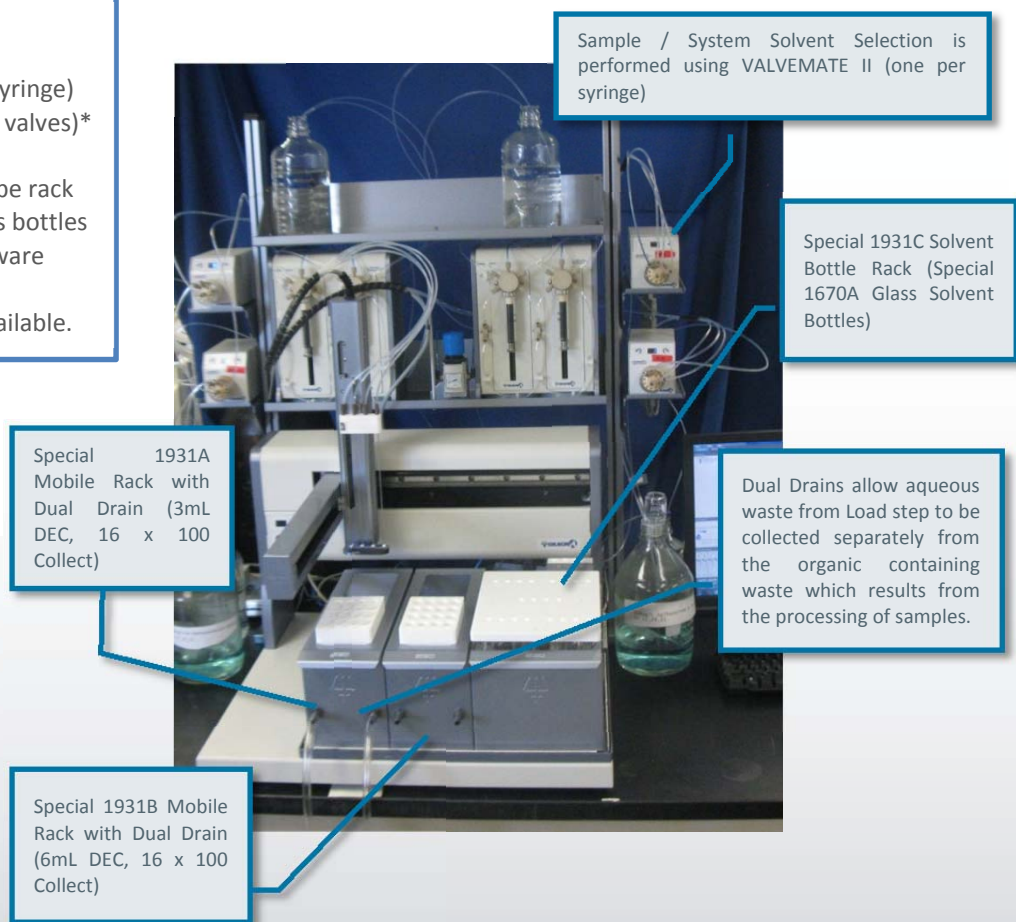
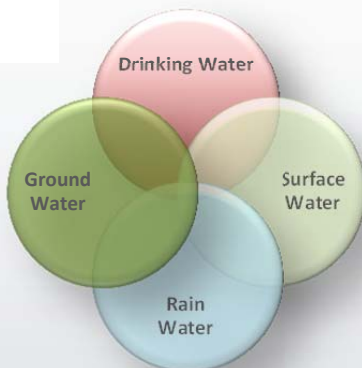
Gilson GX-27X ASPEC™ Large Volume Clean Water System Operation

Gilson automation of SPE for large volume clean water samples eliminates the concerns of sample reproducibility and carryover with consistent concentration and extraction via TRILUTION® LH System Software. Laboratories performing both research and routine testing on drinking water, rain water, ground water, and surface water can run residue and food safety methods for large and small volumes on 1 mL, 3 mL, or 6 mL cartridges using the same bench top system for added efficiency.

The Gilson GX-27X ASPEC LV systems are designed to process sample volumes which are considerably larger than those used on the standard ASPEC system offers, and are targeted towards **clean** water samples, because the samples are drawn directly into the syringes for loading onto an SPE column. Sample selection is accomplished using VALVEMATE® II(s), which are connected to the reservoir side of the syringe pump(s); one VALVEMATE II per syringe. Gilson-supplied software (included on the Special 1931G Documentation CD) was designed to optimize the sample loading process and separate the aqueous and organic waste streams, thereby reducing organic disposal costs.

Automated Large Volume SPE System

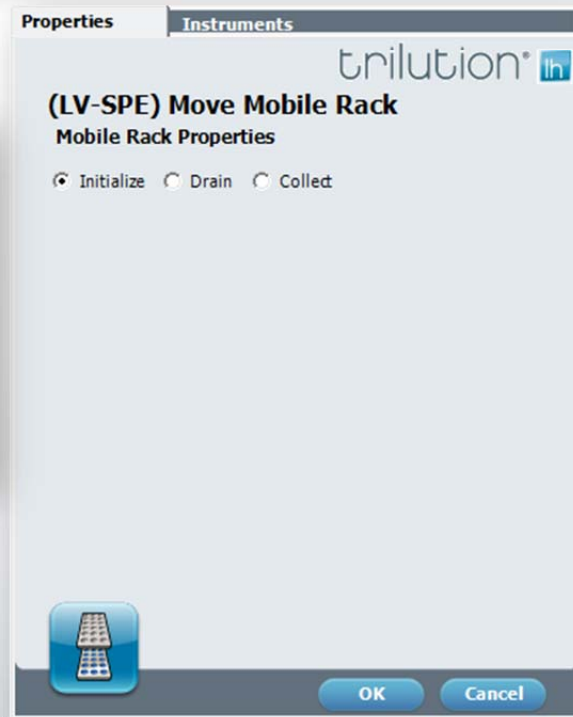
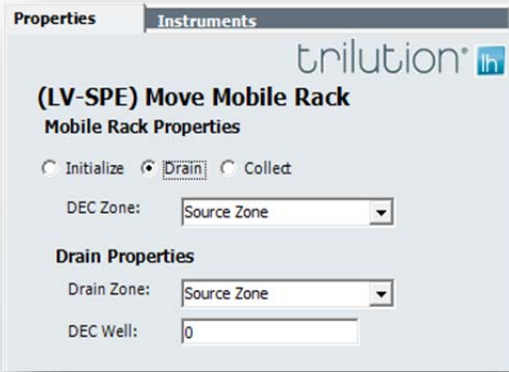
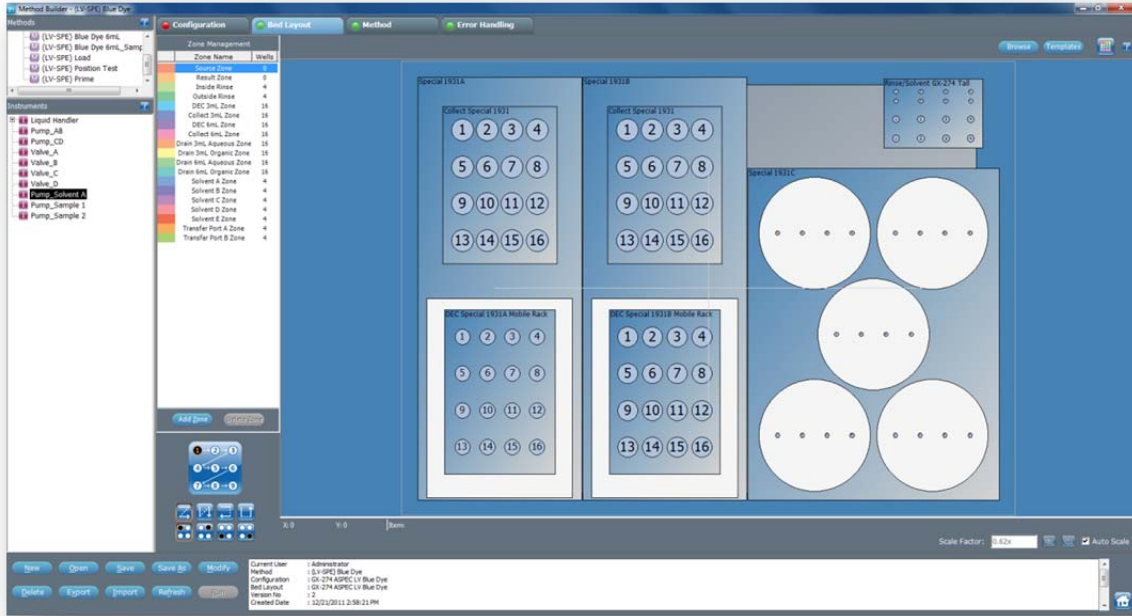
- GX-274 ASPEC™ (for LH & SPE)
 - 406 Dual Syringe Pumps (10 mL Syringe)
 - VALVEMATE® II (with 10-position valves)*
 - SPE collection and sample racks*
 - 3 mL or 6 mL SPE collection tube rack
 - 700 mL solvent rack – w/5 glass bottles
 - TRILUTION® LH v3.0 System Software
 - System Organizer
- *FEP tubing is standard. PEEK is available.





Gilson Operating Software

trilution®



Download the Gilson Application Note for EPA 1694 (PPCPs) using the GX-274 ASPEC™ Large Volume Clean Water System [HERE](#).