

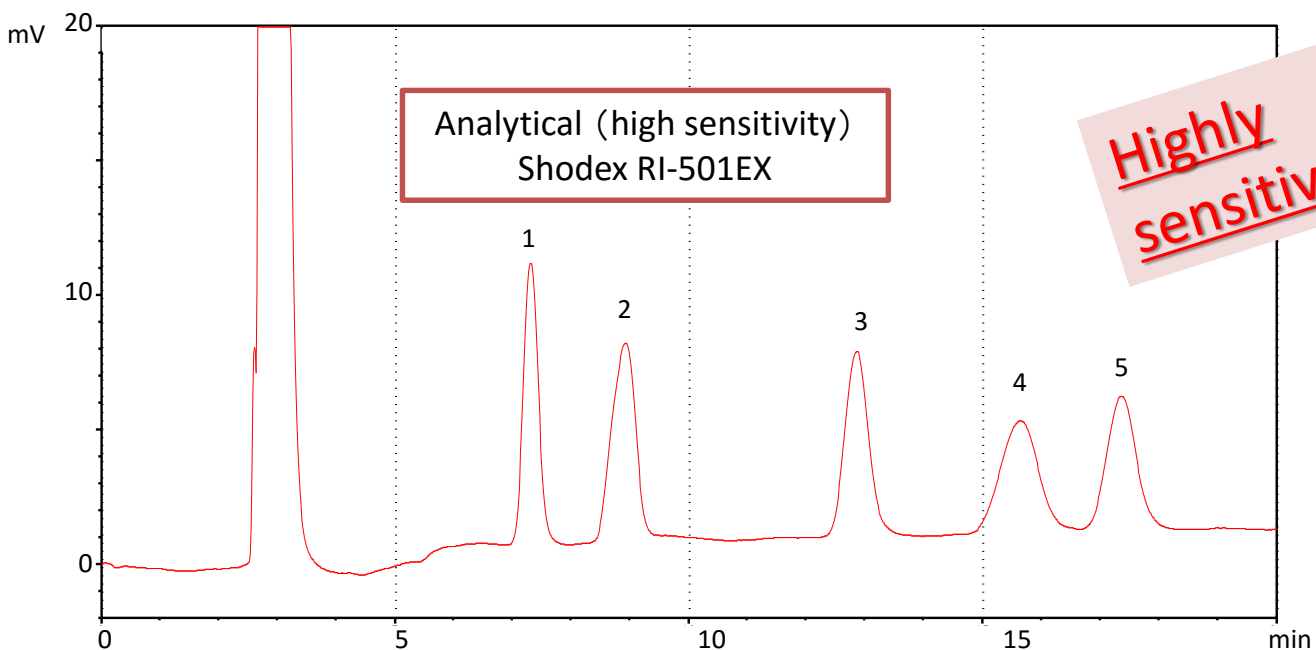
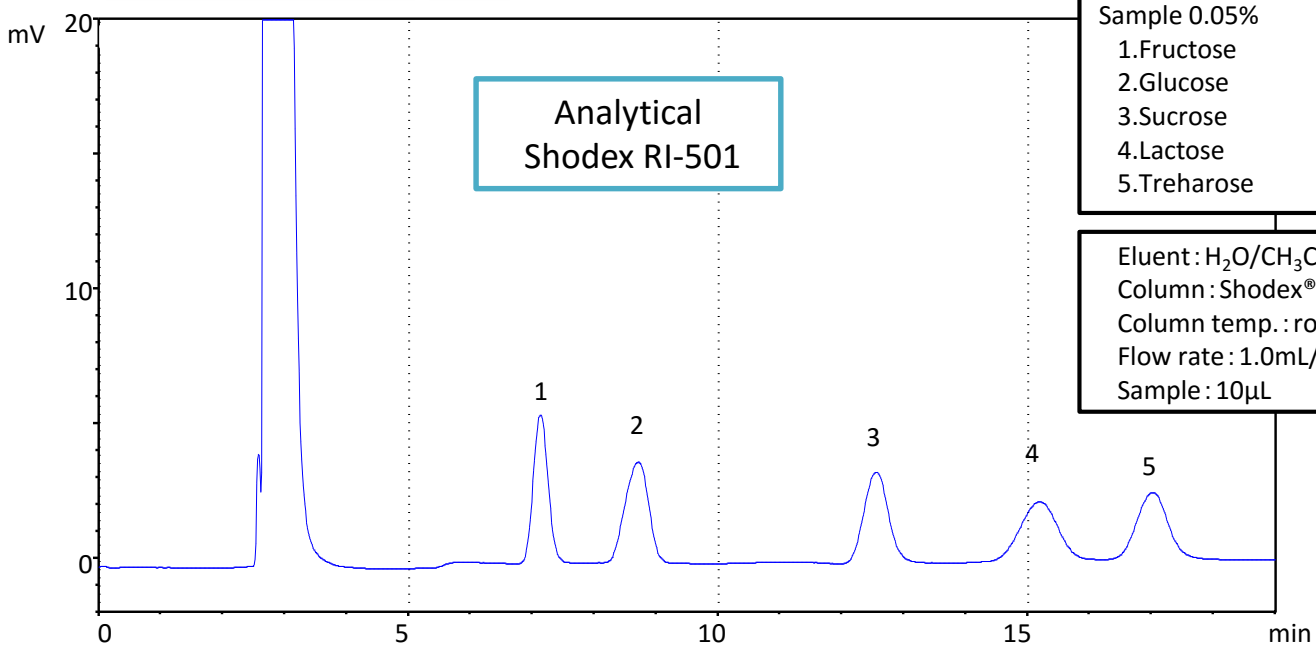


Refractive Index Detector

Shodex® RI-501EX



The RI-501EX is a highly sensitive RI detector incorporated a three-chamber flow cell.



Shodex[®] RI-500 series

The Shodex RI-500 series is a versatile and high sensitive RI detectors that can be used with various manufactures 'HPLC system'. It consists of a color-LCD, an automatic start-up function, and validation wizard. "The detector series are available as Analytic, semi-micro and preparative line up.

■ Specifications

Type Model	RI-500 series			
	Analytical Shodex RI-501	Semi-Preparative Shodex RI-502	Micro Shodex RI-504	Analytical (high sensitivity) Shodex RI-501EX
Measuring method	Deflection type	Deflection type	Deflection type	Deflection type
Flow cell	2chamber type	2chamber type	2chamber type	3chamber type
Refractive Index range	1.00—1.75	1.00—1.75	1.00—1.75	1.00—1.75
Linearity range	600 μ RIU	6000 μ RIU	600 μ RIU	300 μ RIU
Measuring range	0.25—512 μ RIU/FS	2.5—5120 μ RIU/FS	0.25—512 μ RIU/FS	0.125—256 μ RIU/FS
Integrator output range selection	128/512 μ RIU/FS	1280/5120 μ RIU/FS	128/512 μ RIU/FS	64/256 μ RIU/FS
Noise (Pure water, response;1.5Sec)	\leq 2.5 nRIU	\leq 25 nRIU	\leq 5 nRIU	\leq 1 nRIU
Drift (Pure water 1mL/min, PURGE OFF)	0.2 μ RIU/H	2 μ RIU/H	0.2 μ RIU/H	0.1 μ RIU/H
Response	0.1,0.25,0.5,1,1.5,2,3,6sec	0.1,0.25,0.5,1,1.5,2,3,6sec	0.1,0.25,0.5,1,1.5,2,3,6sec	0.1,0.25,0.5,1,1.5,2,3,6sec
Auto zero	Full auto zero	Full auto zero	Full auto zero	Full auto zero
Auto zero range	All Refractive Index Range	All Refractive Index Range	All Refractive Index Range	All Refractive Index Range
Integrator output	0-1V	0-1V	0-1V	0-1V
Recorder output	0-10 mV	0-10 mV	0-10 mV	0-10 mV
External Signal Input	Zero/Purge	Zero/Purge	Zero/Purge	Zero/Purge
External Signal Output	READY/LEAK/ERROR	READY/LEAK/ERROR	READY/LEAK/ERROR	READY/LEAK/ERROR
Flow cell volume	8 μ L	8 μ L	2.5 μ L	8 μ L
Temperature control	OFF,30~55 $^{\circ}$ C <u>Double Temperature control</u>	OFF,30~55 $^{\circ}$ C <u>Double Temperature control</u>	OFF,30~55 $^{\circ}$ C <u>Double Temperature control</u>	OFF,30~55 $^{\circ}$ C <u>Double Temperature control</u>
Usable flowrate	0.2—3mL/min	1—50mL/min	0.2—1mL/min	0.2—3mL/min
Maximum back pressure	50 kPa	50 kPa	50 kPa	50 kPa
Dead volume	IN \rightarrow Cell;60 μ l Cell \rightarrow OUT;630 μ l	IN \rightarrow Cell;120 μ l Cell \rightarrow OUT;540 μ l	IN \rightarrow Cell;10 μ l Cell \rightarrow OUT;385 μ l	IN \rightarrow Cell;80 μ l Cell \rightarrow OUT;630 μ l
Communication port	LAN	LAN	LAN	LAN
Power source	AC100— 240V \pm 10%,50/60Hz 150VA	AC100— 240V \pm 10%,50/60Hz 150VA	AC100— 240V \pm 10%,50/60Hz 150VA	AC100—240V \pm 10%,50/60Hz 150VA
Dimensions and Weight	260W \times 420D \times 165H(mm) 12.5kg	260W \times 420D \times 165H(mm) 12.5kg	260W \times 420D \times 165H(mm) 12.5kg	260W \times 420D \times 165H(mm) 12.5kg

Maker  **Shoko Science Co., Ltd.**

1-3-3, Azamino-Minami Aoba-ku, Yokohama,
225-0012, Japan

Phone: +81-3-3459-5104 (Sale)
E-mail: shodex.tokyo@shoko.co.jp

Distributed by
Showa Denko Europe GmbH
Konrad-Zuse-Platz 3
81829 Munich - Germany

Technical support:
Tel: +49 (0) 89 9399 6237
E-mail: info@shodex.de

 **Shodex[™]**
HPLC Columns

Order:
Tel: +49 (0) 89 9399 6234
E-mail: order@shodex.de

Shodex[®]